

The idea is to make a box for the back of the camera for which the inside dimensions are the same size as the film or paper.

The front of the camera should fit snugly into the back. This will hold the paper in place.

So, if you are using 3.5" by 5" postcard paper the inside of the back of the camera back will be 3.5 x 5".

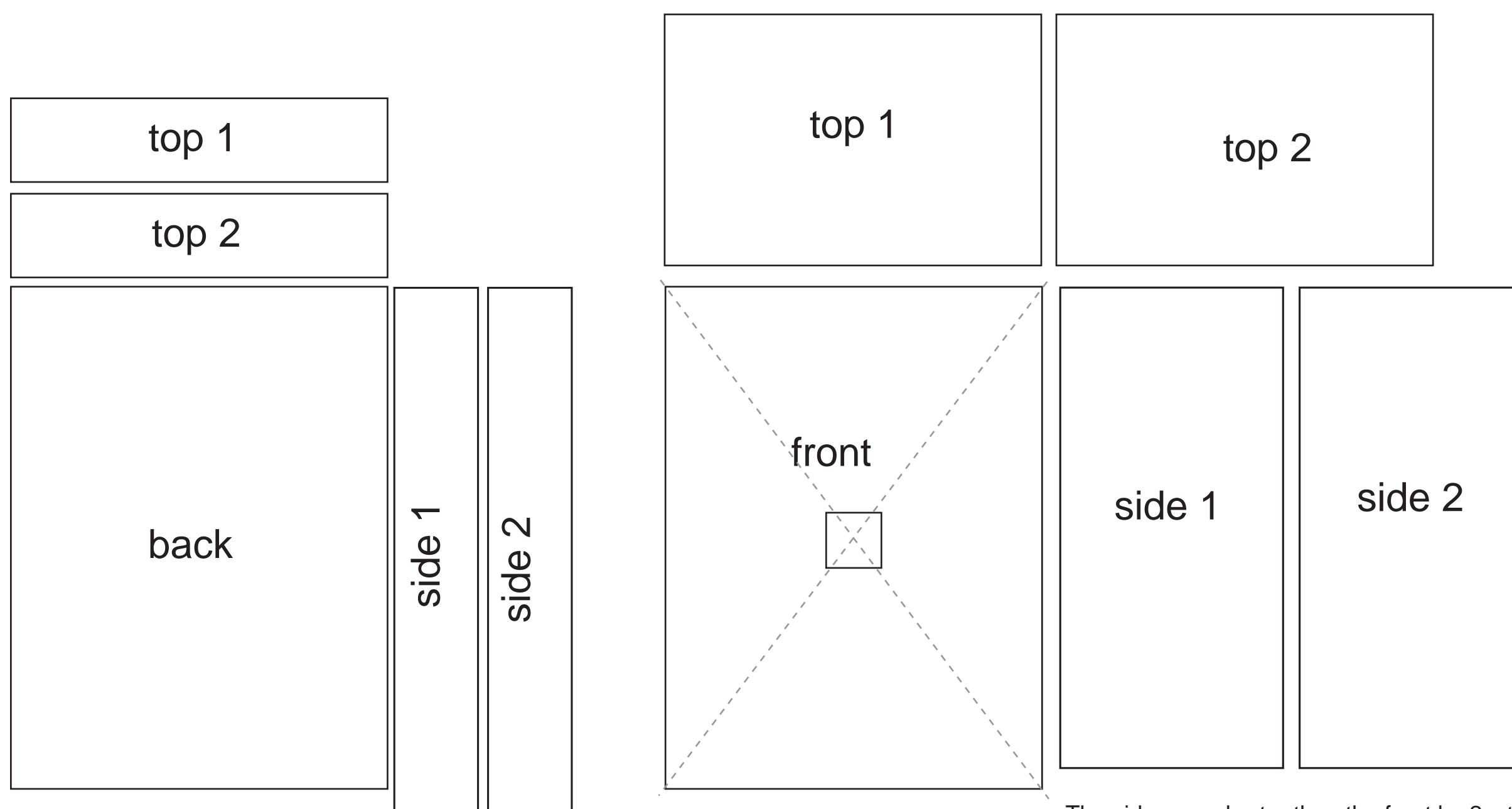
Allow for the thickness of the materials used to build the box.

Materials include:

- 1/4" thick black 'foam-core' (gator board)
- black masking tape
- hot glue or white glue
- ruler
- pencil
- sheets of tin (an aluminium cookie sheet from the grocery store works well)
- a needle or very, very fine drill.

You'll need to cut the following pieces:

- 1 x back of the camera
- 2 x sides for the top and bottom of the back
- 2 x sides for the back
- 1 x front of the camera. You'll need to find the center of this piece and cut a 1" x 1" hole in the center to hold the aluminium sheet with the pinhole in it.
- 2 x pieces for the top and bottom of the front of the camera
- 2 x pieces for the left and right of the camera



NOT TO SCALE!!

The sides are longer than the back by 2 x the thickness of the material.

So, if the material is 1/4", the sides will be 1/2" longer than the length of the back.

The sides are shorter than the front by 2 x the thickness of the material.

So, if the material is 1/4", the sides will be 1/2" shorter than the length of the front.